



Front-mounted cage nut

Information

Cage nuts combine the classic elastic properties of fasteners used for assembly with the strength of multi-threaded steel nuts. Cage nuts are designed to be used in any kind of assembly including blind assemblies and are particularly common in equipment racks. They can be fastened within their housing using bolts and subjected to considerable tightening torque or axial forces. No special tools or specialized fitters are required to mount these nuts. The use of cage nuts allows for a great reduction in assembly time, as costly operations such as tapping, welding or riveting can be avoided. Due to the fact that the nuts are slightly loose within the cage, minor adjustments in the alignment of the parts to be assembled are possible.

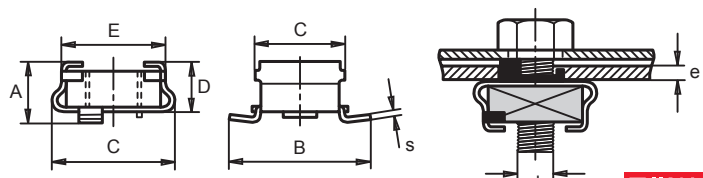
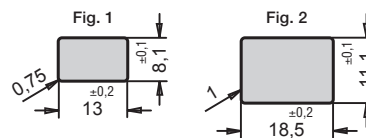
Front-mounted cage nuts are particularly recommended for use with rigid structures with open or tubular frames and in blind assemblies. They can easily be slotted into the mounting hole and can then be moved within the housing using a simple aligning punch.

They can also be removed immediately by reversing the process. The longer of the two tongues incorporates a small step which eliminates the gap between panels.

Front-mounted cage nut

For Metric bolt d	Nominal e	Part n° TF	A ±0,3	B ±0,5	C ±0,3	D ±0,3	E ±0,3	s	G ±0,3	Box quantity	Outer box quantity
M.4	(0,5-1,0)	03101012	7,6	19,5	13	5,9	11,2	0,5	12	200	1600
M.4	(1,0-1,5)	03101020	8,1	18,5	13	5,9	11,2	0,5	12	200	1600
M.4	(1,5-2,0)	03101039	8,6	17,5	13	5,9	11,2	0,5	12	200	1600
M.5	(0,5-1,0)	03101047	7,6	19,5	13	5,9	11,2	0,5	12	200	1600
M.5	(1,0-1,5)	03101055	8,1	18,5	13	5,9	11,2	0,5	12	200	1600
M.5	(1,5-2,0)	03101063	8,6	17,5	13	5,9	11,2	0,5	12	200	1600
M.6	(0,5-1,0)	03101071	7,6	19,5	13	5,9	11,2	0,5	12	200	1600
M.6	(1,0-1,5)	03101080	8,1	18,5	13	5,9	11,2	0,5	12	200	1600
M.6	(1,5-2,0)	03101098	8,6	17,5	13	5,9	11,2	0,5	12	200	1600
M.7	(0,6-1,1)	03101100	9,4	27,4	19	7,4	15,5	0,7	16,5	100	1600
M.7	(1,1-1,6)	03101119	9,4	26,4	19	7,4	15,5	0,7	16,5	100	1600
M.7	(1,6-2,1)	03101127	10,4	25,4	19	7,4	15,5	0,7	16,5	100	1600
M.8	(0,6-1,1)	03101135	9,4	27,4	19	7,4	15,5	0,7	16,5	100	1600
M.8	(1,1-1,6)	03101143	9,9	26,4	19	7,4	15,5	0,7	16,5	100	800
M.8	(1,6-2,1)	03101151	10,4	25,4	19	7,4	15,5	0,7	16,5	100	800

Mounting Holes



Material specifications:

Cage: Spring Steel
HRc 40+47 (HV 390-470)

Surface treatment:

Anti-rust oil-dipped